

ERNST MORITZ ARNDT
UNIVERSITÄT GREIFSWALD



Wissen
lockt.
Seit 1456



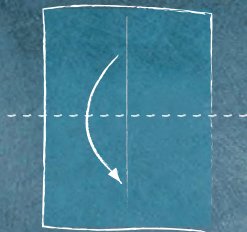
**Greifswald
International**

Studying at the University of Greifswald

How to build your own paper boat



1 Start with a rectangular piece of paper. Fold in half, then reopen.



2 Fold in half downwards.



3 Bring corners in to centre line.



4 Fold uppermost layer upwards and do the same to the back. Crease well.



5 Fold the corners to the inside. Then pull the sides out and flatten.



6 Fold front layer up to top, then do the same at the back.



7 Pull the sides apart and flatten.



8 Gently pull the top parts of the model outwards, making a boat shape.



9 Flatten well to crease all folds. Then open out slightly, forming a boat shape.



10 Now let the journey begin: Your boat is finished...

Contact

International Office

Domstraße 8

17489 Greifswald

International.Office@uni-greifswald.de

Phone: +49 3834 86-1116

Opening Hours:

Tue/Thu 9:30 am-12 noon & 2-4 pm

(During semester break not on Thursday afternoon)

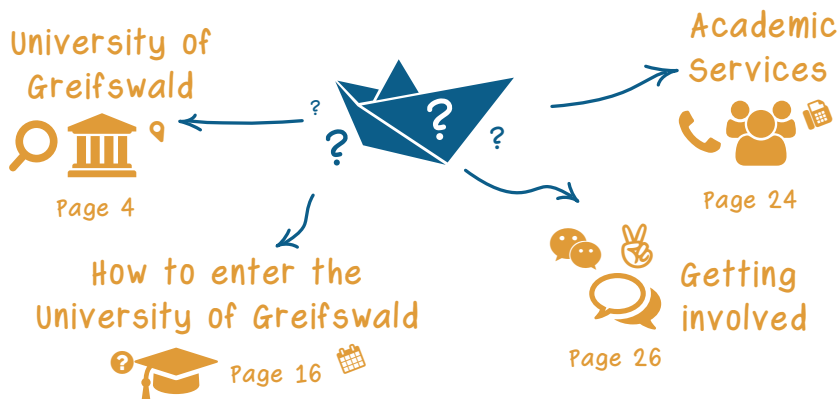
Wissen lockt
nach Greifswald!

WELCOME TO GREIFSWALD!

The University of Greifswald has attracted international students and researchers since its foundation more than 550 years ago. Responsible for all matters international and the University's partnerships, the International Office (IO) is your first contact in Greifswald, helping you navigate our University. The IO offers incoming international students practical assistance concerning academic life and legal formalities, as well as a varied cultural programme. Just stop by our little blue house.

The following pages introduce you to the University of Greifswald and provide an overview of the most important academic, administrative, and cultural information necessary to ensure your academic success in Greifswald.

We are looking forward to having you in Greifswald, as ambassador of your home university, and as part of our international community!



Content

A Few Words of Welcome from the Vice-Chancellor	2
A Few Words of Welcome from AstA University of Greifswald	3
Faculty of Theology	4
Faculty of Law and Economics	6
Faculty of Medicine	8
Faculty of Arts and Humanities	10
Faculty of Mathematics and Natural Sciences	12
How to Enter the University of Greifswald	14
Academic Counselling and Academic Calendar	16
Summer School Greifswald Summer	17
German Language Courses	18
Studienkolleg - Preparatory Study Programme	19
ERASMUS+, Student Exchange, and Free Movers	20
Degree Seeking Students	21
Postgraduate Studies and Graduate Academy	22
Academic Services	23
Gender Equality and Family Services	24
Getting involved	25
Town Map	26
	29



Prof. Dr. Johanna Weber

At a German university the Vice-Chancellor is the head of the university with a focus on academic affairs. He or she is a professor elected for a certain period of time.

Prof. Weber is Greifswald's 352nd Vice-Chancellor and the first woman in more than 550 years to be elected into this high office.

A FEW WORDS OF WELCOME FROM THE VICE-CHANCELLOR

Dear students,

the University of Greifswald is one of the oldest universities in Germany. It has a long tradition, but at the same time is still a young and modern university with excellent teaching and research conditions.

The historic town centre is home to beautifully restored department buildings, lecture theatres and libraries. Spacious and modern buildings for natural and life sciences have been built on a new extensive campus on the edge of the old town. Short distances within and to and from the locations allow intensive and personal cooperation between the teaching staff and the students. Newcomers to the University receive a warm welcome and are integrated quickly into the community.

At the University of Greifswald there is a broad range of subjects taught in five faculties. Research is also characterised by the diversity of specialist topics on offer and intensive interdisciplinary cooperation. Academics from our University maintain international research relations and their research work receives international attention and recognition.

I warmly invite you to a period of study or research at the University of Greifswald.

Prof. Dr. Johanna Weber

Vice-Chancellor of the Ernst Moritz Arndt University

A FEW WORDS OF WELCOME FROM ASTA (STUDENTS' UNION)

Dear students,

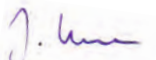
Greifswald is the perfect place to spend your semester(s) abroad. Here you will find a large variety of cultural events and opportunities to meet many of the friendly openminded citizens who are excited to demonstrate their culture and learn about yours.

Founded in 1456, the University of Greifswald has attracted generations of students who in turn have influenced the town's development. We welcome and invite you to become a part of the student culture with its long history and many traditions.

Here you will find dozens of active student initiatives, several of which are primarily focused on the international community within Greifswald. LEI is one such group which organises many of the activities for Erasmus students.

The student members of AStA (Allgemeiner Studierendenausschuss – Students' Union) look forward to helping you adjust to student life how ever they can, so please do not hesitate to ask us any questions you may have.

Working together, we can make this time in Greifswald into one of the best experiences in our lives!



Johanna Krone

Peperentative of International Affairs of AStA



Johanna Krone – AStA

AStA (Students' Union)

Friedrich-Loeffler-Straße 28
17487 Greifswald

Phone: +49 3834 86-1750

asta@uni-greifswald.de
asta_integration@uni-greifswald.de
www.asta-greifswald.de



Did you know?

Greifswald and the surrounding region fell under Swedish rule during the Thirty Years War, and remained so until 1815, making Greifswald the oldest Swedish university. So in 2006, the university celebrated its 550th anniversary. One of the honoured guest was Queen Silvia of Sweden.

ERNST MORITZ ARNDT UNIVERSITY OF GREIFSWALD

Founded in 1456, the University of Greifswald is one of the oldest academic institutions in northern Germany and the surrounding Baltic region. From its beginning onwards, students from this area have come to Greifswald to study at the University. Today the University of Greifswald has an extensive network of international contacts and partnerships, bringing academics from all around the globe to Greifswald and offering a wide range of academic possibilities while proudly maintaining its historic and traditional ties around the Baltic Sea.

The University of Greifswald is a medium-sized modern university with about 11,000 enrolled students. The low student to staff ratio, combined with the close proximity of the facilities, fosters a positive and rewarding study environment, stimulating cooperation between lecturers and students. The enrolled students come to Greifswald from all over Germa-

ny, while the rest of the student body comes from over 90 different countries. The University has established 24 partnerships with fellow institutions worldwide, while maintaining ERASMUS+ agreements with over 150 universities in Europe.



The baroque Assembly Hall
in the Main Building
of the University

The five colours of the University's emblem symbolise the five faculties: Theology, Law and Economics, Medicine, Arts and Humanities, and Mathematics and Natural Sciences. The Humanities and Social Sciences are spread over the historical town centre, where two of the town's characteristic landmarks, the central lecture hall building and the main administration building with its wonderful baroque Assembly Hall, can also be found. The University Medicine and clinics as well as the Natural Sciences are



Auditorium Maximum

conveniently located on a modern and spacious campus, which adjoins the historical part of town.

The breadth of disciplines within the five faculties forms not only the basis for the wide range of degree courses, but it also fosters an array of diverse research interests. There are five main fields of research at the University of Greifswald:

- Microbial Proteomics and Protein Technologies
- Plasma Physics
- Community Medicine and Individualized Medicine
- Cultures of the Baltic Sea Region
- Environmental Change: Responses and Adaption (ECRA)



Did you know?

Greifswald University is the only German university that employs two Dachshunds as service dogs. They assist the University's forester on his daily tours through the large university forest.



Dom St. Nikolai

FACULTY OF THEOLOGY

One of the four founding faculties is the Faculty of Theology. Subjects of research and teaching at the Faculty of Theology are the biblical, dogmatic, historical and practical traditions of Christianity from the perspective of today's responsibilities of Church and society.

The faculty offers degree programmes in Protestant Theology and Protestant Religion. The study of Protestant Theology prepares students for their professions as parish priests and thus enables them to obtain specific theological knowledge and skills essential to communicate the Christian tradition and belief in the recent society cultural context. This area of study includes the Old and New Testament, Church History, Systematic and Practical Theology.

The teacher training degree programme of Protestant Religion qualifies for a profession in religious education at state comprehensive schools. Here, the specific study contents are complemented by Religion Psychology, Pedagogy and Didactics. In 2004, the Faculty of Theology established the first institute in Germany that involves evangelization and parish development in research and teaching.



The Low-German Imitatio Christi is one of the oldest printed Christian devotional books.





Did you know?

Until the early 20th century the University had its own student prison, the so called "Karzer". It was in use from 1885 till 1914. Learn more about the university by touring its historic campus. The former student prison is a particular highlight, with much of the original graffiti to be seen. Tours are offered by the Kustodie and guided by students dressed in traditional robes known as "pedellentalar".

Universitätskustodie

Phone: +49 3834 86-3060/-3061
www.uni-greifswald.de/informieren/kustodie

FACULTY OF LAW AND ECONOMICS

Future lawyers and economists are taught at this Faculty. The aim of the study of law is to enable students to interpret and practically apply the existing laws on the basis of established theoretical knowledge and in view of professional requirements within structured arguments. Essential components of the study of Law are Private Law, Criminal Law, and Public Law. Moreover, students can specialise in areas like Criminology, Health and Medicine law, European law and Legal Comparison, Private Economic Law (Labour Law, Antitrust Law), and (social, economic and philosophical) Foundations of Public Law. Apart from the traditional state examination degree, Law students in Greifswald can also finish their studies as Bachelors (LL.B.) and Masters (LL.M.) with complementary economic components.

Greifswald is now the only university in Germany, where students of Business Administration can still earn the respec-



The Institute of Law in the Domstraße

ted Diplom degree. As part of Economics, Business Management examines the economic and social prerequisites and functions of enterprises and other economic institutions. Parts of the degree programme of Business Management are Supply Chain Management, Network Planning, Production Economy, Financial Economy and Marketing, Accountancy, Personnel and Organisational Economy, Health Management, International Money Market and International Financial Management.





"Greifswald can pride itself with one of Germany's most modern hospitals for educating students. As the University is not too big, the excellent student-professor ratio is another great bonus when studying medicine here!"
(Noumi – Indonesia)

FACULTY OF MEDICINE

The Medical Faculty, called Universitätsmedizin, teaches Medicine, Dentistry and Biomedical Sciences. University placements for beginners in Medicine and dentistry are in high demand, both in absolute terms and compared to other medical schools nationwide. The entire medical campus with its 21 clinics and 19 institutes has recently moved to a new complex of modern buildings, where students and physicians find optimal conditions to study and take care of the patients that are entrusted to them.

A low student-teacher ratio allows for small classes and close interactions between students and their academic teachers. The Office of Student Affairs helps to organise individual class schedules and provides support with many everyday problems related to the course of studies. Practical skills for future physicians, such as blood withdrawal, physical examination of patients or even as-

sistance at a birth, can be practiced on appropriate teaching models outside the standard curriculum in a special skills lab, which also opens its doors in the evening for students to learn on their own or in a group. Excellent students may apply for a scholarship within the faculty's Gerhard Domagk Student Training programme. The Faculty's research focusses on Community Medicine and Dentistry as well as on Molecular Medicine, and offers ample opportunities for students and young researchers to acquire further academic qualification.



The main entrance of the "Universitätsklinikum"

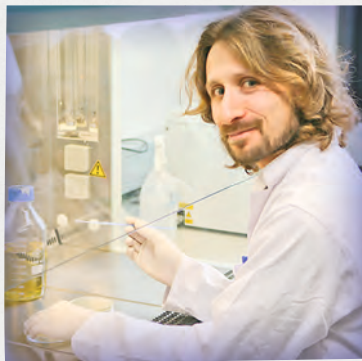




FACULTY OF MATHEMATICS AND NATURAL SCIENCES

70 Professors teach at the Faculty of Mathematical & Natural Sciences which incorporates the Departments of Biochemistry, Biology, Geography and Geology, Mathematics, Pharmacy, Physics and Psychology. Main research areas are

Molecular Biology and Biotechnology, Plasma Physics, and Environmental Change: Responses and Adaptation. Various interdisciplinary study programmes have emerged from these fields, such as Human Biology, Biomathematics, Environmental Sciences, in addition to modern programmes at B.Sc. and M.Sc. levels in Biochemistry, Biology, Geosciences, Geography, Mathematics, Pharmacy, Physics and Psychology. Doctoral programmes with funding include interdisciplinary research in Biochemistry and Medicine, Functional Genomics and Infection, as well as Plasma Physics. Cooperations with local research institutions include Max-Planck-Institute for Plasma Physics, Leibniz-Institute for Plasma Science and Technology, Leibniz-Institute for Baltic Sea Research and Federal Research Institute for Animal Health. International research partners offer opportunities for study and research abroad.



Institute for Biochemistry



The field of Plasma Physics is a key field of research that brings together the University and two prominent research institutes, the Leibniz Institute for Plasma Science and Technology (INP) and the Max-Planck-Institute for Plasmaphysics (IPP).

In 2015, Wendelstein 7-X, the world's largest stellarator-type fusion device, was completed at the IPP. It has already successfully produced plasma and will investigate the suitability of this type of device for a power station.

Subjects of Study

- English and American Studies
- Baltic Studies
- Finnish and Scandinavian Studies
- Slavonic Studies
- German Language and Literature
- Fine Art and Art History
- Education
- History
- Political Science and Communication Studies
- Philosophy
- Church Music and Musicology

FACULTY OF ARTS AND HUMANITIES

The Faculty of Arts and Humanities belongs to the four classical founding faculties of the University of Greifswald. With over 3,000 students, it is the second largest faculty. It has a threefold structure (Languages; History, Philosophy and Fine Arts; as well as Social- and Behavioural Sciences). These parts are subdivided into 11 departments which cover a wide range of research subjects. These subjects can be studied in Bachelor and Master as well as teacher training degree programmes.

One major field of research and teaching at the Faculty of Arts and Humanities is the Baltic Sea region with its history, languages and culture. Close academic relations to Northern and Eastern European universities are an integral part of the international cooperation of the Faculty. The DFG founded interdisciplinary International Research Training Group (IRTG) "Baltic Borderlands: Shifting Boundaries of Mind and Culture in the Borderlands



Art and Art History, ...

of the Baltic Sea Region", a collaborative programme between Lund, Tartu and Greifswald, is the backbone of research in the Baltic Sea region. PHD students and fellows from several countries conduct research on processes of bordering to investigate the cultural and mental implications of border change within the entire region. The IZfG – Interdisciplinary Centre for Women and Gender Studies – provides excellent conditions for students of gender studies.



...Church Music and Musicology, ...



...German Language and Literature, ...



...and English and American Studies are just a few of the Faculty's programmes.



How to enter the University of Greifswald

There are many doors through which you can enter the University of Greifswald. Which door you choose will depend on factors such as the current stage of your academic career, your German language skills, or the duration of your planned stay in Greifswald.

Greifswald Summer

This summer school is an opportunity to learn German in a relaxed atmosphere while getting to know the region, student life, the University, and the town over the course of a 2, 4, 6, or 8 week stay.

► p.18

apply via
International Office

DSH Course

If you meet all prerequisites for enrolment in higher education except for the necessary German language skills, the University offers a DSH course to ensure a successful transition to studying in German.

► p.21

apply via
www.uni-assist.de

Studienkolleg

Applicants who do not meet the prerequisites for enrolling in higher education (eg. unrecognised high school qualifications) may study at the Studienkolleg in order to obtain the necessary qualifications.

► p.20

apply via
www.uni-assist.de

Academic Exchange/ ERASMUS+

The University of Greifswald has exchange partners all around the world. If you come from one of our partner universities please contact your own International Office for information concerning the application procedure.

► p.19

apply via
International Office

Free Mover

Qualified international students from non-partner universities or programmes are welcome to apply to study at the University of Greifswald for up to two semesters.

► p.19

apply via
International Office

PhD Studies

The best way to enroll in PhD studies is to contact Professors directly. In public Universities in Germany, there are minimal tuition fees involved.

► p.23

apply via
International Office

Degree-Seeking Students

There are more than 90 degree-programmes to choose from if you wish to study full-time in Greifswald. Excellent teaching, low costs of tuition, and minimal living costs are a few of the benefits of pursuing a degree in Germany.

Notice: European Citizens interested in Medicine, Dentistry, and Pharmacy apply via:
www.hochschulstart.de

► p.22

apply via
www.uni-assist.de



Located to the right of the University's main building, you find the [International Office \(IO\)](#), which is the centre of the international community in Greifswald. The team manages international partnerships and exchange programmes, takes care of international events in Greifswald and the region and provides incoming and outgoing students, researchers or staff members with assistance before, during and after their stay. To learn more about the Office and the contact persons please visit: www.uni-greifswald.de/international
During opening hours, you can stop by without an appointment.



THE ACADEMIC YEAR

Winter Semester

(1st October - 31st March)

Start of lecture period: [early October](#)

Intensive language course: [mid-September](#)

End of lecture period: [early February](#)

Examination period: [until the end of February](#)

Applications will be accepted until 15th of July (except preparatory course: 15th of June)

Summer Semester

(1st April - 30th September):

Start of lecture period: [early April](#)

Intensive language course: [mid-March](#)

End of lecture period: [early July](#)

Examination period: [until the end of July](#)

Applications will be accepted until 15th of January (except preparatory course: 15th of November)

Your first point of contact:

International Office

Domstraße 8

17487 Greifswald

Phone: +49 3834 86-1116

international.office@uni-greifswald.de

www.uni-greifswald.de/international

For academic counselling:

Academic Advisory Services

(Zentrale Studienberatung)

Rubenowstraße 2

17487 Greifswald

Phone: +49 3834 86-1294

www.uni-greifswald.de/studieren/studienberatung



Impressions from the
island of Hiddensee

For more information

[www.uni-greifswald.de/
summerschool](http://www.uni-greifswald.de/summerschool)

[greifswaldsummer@
uni-greifswald.de](mailto:greifswaldsummer@uni-greifswald.de)

SUMMER SCHOOL *GREIFSWALD SUMMER*

Greifswald Summer is a collective effort from the Lektorat Deutsch als Fremdsprache, the International Office, many other members and students of the University, as well as interested citizens of Greifswald. It provides international students with an exciting opportunity to learn German in a relaxed atmosphere while getting to know the region, student life, the University, and the town. Because of its close ties to the department of Landscape Ecology, it can provide different perspectives on cultural and environmental issues concerning Greifswald and Germany while extending in many cases to the world. *Greifswald Summer* helps students develop more than just language skills, they also gain intercultural competences, social skills, and friends.

In addition to the 20 hours of German language course work per week, the summer school offers a variety of workshops (AGs). Cultural events and field trips within the region, as well as excursions to



Berlin and the surrounding islands. Students may choose to attend for 2, 4, 6 or 8 weeks.

STUDENT EXCHANGE, ERASMUS+ AND FREE MOVERS

Every semester, students from Greifswald's partner universities in Europe and around the world come to Greifswald to spend a semester or two at the University. These international exchanges are usually realised through the ERASMUS+ programme or within the framework of agreements between Greifswald and numerous partner universities. Application procedures and placements are processed by the home university.

ERASMUS students usually receive small grants for mobility from their home university. Students from other partners may also be eligible for scholarships through their home or Greifswald University as well.

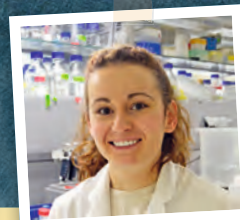
All exchange students receive a transcript of records after their studies in Greifswald. Under ERASMUS+ the home university is obliged to recognise the courses and studies completed by the

student abroad. However, please take the appropriate steps before coming to Greifswald to ensure your course work will transfer back.

The International Office offers support before, during, and after your stay. Furthermore, all ERASMUS and exchange students may participate in a 2 to 3 week intensive German language course before the start of the semester, free of charge. Coming to Greifswald even earlier and participating in the University's Summer School is highly recommended, since it will give you more time and opportunity for language learning. Plus, it will let you experience summer beside the Baltic Sea!

Free Mover

Please contact the International Office in Greifswald if you are interested in coming to Greifswald without your university being a partner.



"Spending an ERASMUS semester in Greifswald has been the best thing that ever happened to me. The opportunity to gain so many new experiences, broaden my horizons and get to know people from many different countries have made my choice well worth it. The University of Greifswald

guides and supports ERASMUS students very well. There are so many trips and events on offer. Furthermore, the buddy programme is very helpful, because it connects you with local students who can help you with any problems." (Kasia – Poland)

Erasmus

erasmus@uni-greifswald.de
hochschulaustausch@uni-greifswald.de
www.uni-greifswald.de/erasmus



"For me, Greifswald is a great choice if you want to study. I can recommend the preparatory courses (Studienkolleg), because they offer excellent education and prepare you well for your studies in Germany."
(Imad – Marokko)

Studienkolleg

Makarenkostraße 22

Phone: +49 3834 86-1191

[www.uni-greifswald.de/
international/studienkolleg](http://www.uni-greifswald.de/international/studienkolleg)

STUDIENKOLLEG – PREPARATORY COURSE

Approximately 120 applicants from over 20 countries attend the University's preparatory programme, Studienkolleg, every semester, with full student status. The Studienkolleg is responsible for both the preparatory courses, and for administering the "Feststellungsprüfung", which qualifies for studying at a German university. The course work prepares students by providing the necessary vocabulary and language skills based on their intended field of study.

- the M-Courses for degree programmes in Medicine, Biology, Pharmacy, and Sports
- the T-Courses for degree programmes in technical subjects, Mathematics and Natural Sciences (except Biology)
- the G/S-Courses for degree programmes in languages and subjects related to Humanities and Arts

The relatively low student-professor ratio fosters positive support on an individual basis.



Students are able to learn about German culture in the classroom and group activities like excursions and cultural events with both fellow international and German students.

Candidates must pass an entrance exam for admission and must be capable of the German language at a B1 level.

GERMAN LANGUAGE COURSES

The Lektorat Deutsch als Fremdsprache offers a wide range of German language courses on different levels prior to and during the semester to the University's international students and researchers:

In order to ensure successful studies in Germany, a certain knowledge of the German language is required. As verification of language proficiency, the University offers the DSH exam (Deutsche Sprachprüfung für den Hochschulzugang).

A 1-2 semester long advanced level language course is offered in preparation for this exam and for studying in Greifswald. Structure and material of this DSH course focus on academic grammar and vocabulary in both written and spoken forms, providing students a solid foundation for comprehending, working with, and ultimately producing academic texts. In addition, enrolled students may participate in courses on phonetics or con-

versation tailored to problems stemming from their native languages. The course is also an excellent way for students to begin building connections and familiarising themselves with their future faculty. Enrolment at the University is a pre-requisite for admission to the DSH course. Applicants need to have already achieved a B1 level of German to participate. The German language course and the DSH are subject to fees.

To prepare you for your time in Greifswald, we highly recommend participation in the University's Summer School: Greifswald Summer. You may also continue your language training in a range of semester courses offered at different levels.

Language tandems (see www.asta-greifswald.de) are another good opportunity to further improve your German language skills, and of course to find friends in Greifswald.



Did you know?

It makes sense to learn German! The German language was once the lingua franca of Central, Eastern and Northern Europe, and remains the language with the most native speakers (about 100 million) in Europe.

Lektorat Deutsch als Fremdsprache

Mirjam Herklotz
Makarenkostr. 22
17491 Greifswald
phone: +49 3834 86-3435
herklotzm@uni-greifswald.de



"The University of Greifswald creates highly sought-after graduates, equipped with the necessary intellectual leadership and personal and professional skills to succeed in life. It is an honour to be part of this community. Personally, I thank DAAD and their scholarship opportunity for making this possible."

(Mary – Kenya)

Please check the INOBIS (www.inobis.de) or ANABIN (anabin.kmk.org) databases in order to find out whether your qualifications are sufficient to enter a German university directly. Otherwise, you might choose to apply to the University's Studienkolleg (see page 20)

GETTING YOUR DEGREE FROM THE UNIVERSITY OF GREIFSWALD

The University of Greifswald offers a wide variety of subjects. In general there are five different types of degree programmes available, some of which end in university examinations, others are held by state or church examination authorities.

University examination:

- Bachelor degrees in both single and double subject programmes
- Master degrees
- Diplom degree

State examination:

- Exams for Teaching students
- Law
- Medicine, Pharmacy

Additional qualifications may be earned via postgraduate programmes and other courses of further study. Degree programmes typically begin with the winter semester, although some may be started in the summer semester.



While a brief overview is included in the pages of the faculties in this booklet, the complete list of subjects can be found at www.uni-greifswald.de/studieren.

More information for international applicants:
bew_info@uni-greifswald.de

POSTGRADUATE STUDIES AND GRADUATE ACADEMY

The University of Greifswald has no pre-defined doctorate programme, placing the onus upon the student to contact potential professors to supervise their research. When an application is accepted by a professor, applicants must then submit all relevant documents to the International Office for review before coming to Greifswald. Successful applicants have a range of possibilities for financial support. The DAAD provides easy access to a scholarship database with programmes from over 50 different organisations. Please contact the International Office and the [Welcome Centre](#) for detailed information.

Greifswald Graduate Academy

All Greifswald PhD students are invited to join the University's Graduate Academy. It offers a comprehensive qualification programme including workshops on good academic practice, research ethics, academic publishing, and career management in and beyond academia. It furthermore prepares PhD students for successful careers, whether in the research sector or other areas. Members of the Graduate Academy also receive training to develop key skills such as management and leadership. Post-doctoral researchers are welcome as well.



Welcome Centre Greifswald

Domstraße 8

Phone: +49 3834 86-1175

welcome@uni-greifswald.de

www.welcome-centre-greifswald.de

Graduiertenakademie

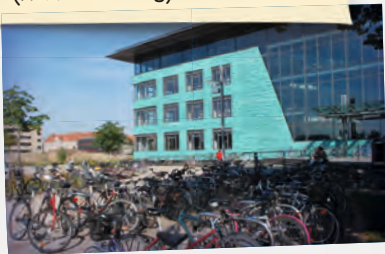
Domstraße 14

Phone: +49 3834 86-1618

www.graduiertenakademie.uni-greifswald.de



"I like to go to the library, because I like the atmosphere and find it easiest to concentrate on my work here when studying for my exams."
(Martina – Italy)



The Central university Library



The University Computer Centre

ACADEMIC SERVICES

Containing more than three million volumes, the [University Library of Greifswald](#) (UB) consists of:

- The Central University Library at Felix-Hausdorff-Straße
- The Old Books Library at Rubenowstraße
- Library at Friedrich-Loeffler-Straße

The Central University Library was opened in 2001. It has 370 reading desks with ethernet connections, 87 desks equipped with PCs, and 16 desks providing access to multimedia equipment. The new library in the centre of town opened in 2015. 256 students can find an optimal place to study here. Since 1998, the University Library Greifswald has hosted the Centre for Baltic Literature. This special collection is an integral part of the University's key field of research: the Baltic Sea Region. The library of Greifswald holds a valuable collection of medieval manuscripts and incunabula (early prints), among them is the famous 36-line

Gutenberg Bible. Other important collections like the Peatland and Nature Conservation International Library are affiliated.

The [Foreign Languages and Multimedia Centre](#) offers students modules, media literacy classes, and language courses in 11 foreign languages, such as French, Italian or Farsi. The Centre provides excellent multimedia resources which are integrated into the language programmes. Its online tandem learning programme Seagull can connect language partners beyond the borders of Europe. www.seagull-project.eu

The [University Computer Centre](#) maintains the University's network and the central pc pools. Students can work in the modern and well-equipped computer labs where they have open access to the internet, the library system, as well as national and international databases. Furthermore, the Computer Centre regularly offers courses for beginners, and can provide manuals for many different applications.

GENDER EQUALITY AND SUPPORT FOR FAMILIES

At the University of Greifswald, the amount of women gaining doctoral degrees is above the German average. Through a comprehensive mentoring programme aimed at advancing the career prospects of highly qualified female researchers during the early stages of their career, the university seeks to increase the number of female professors, and to boost the representation of women in senior roles in academia and business.

The University of Greifswald is a family-oriented organisation. Consequently, it is dedicated to creating sustainable, family-friendly working conditions for research and administrative staff, as well as for students.

Families can find back-up childcare or childcare during conferences at the centrally located Familienwohnung. The University's Family Service organises school holiday childcare for the period of time in

which school holidays overlap the regular semester dates. The children are looked after by pedagogically-trained staff. The Family Service also helps with finding a suitable babysitter.

University Representative for Gender Equality

Ruth Terodde

Phone: +49 3834 86-3491

gleichstellungsbuero@uni-greifswald.de

Mentoring for women

Annette Ehmler

Phone: +49 3834 86-1146

ehmler@uni-greifswald.de

Family Service

Johanna Ehlers

Phone: +49 3834 86-1236

familienervice@uni-greifswald.de



One of the University's goals ...



... a family-friendly atmosphere.



"I'm involved in the international community in Greifswald, because I love to meet students from all over the world, learn more about their different cultures and make new friends. The team atmosphere in the LEI is great and everyone is really friendly and open-minded. It is always great to experience the students' gratitude for the diverse programme we organise throughout each semester." (Adina – Germany)

GETTING INVOLVED

Becoming part of Greifswald's student community is easy. The International Office can be your starting point to learn more about how to get involved. It coordinates with many of the student initiatives and offers a programme of cultural events. Furthermore, you may sign up for a "Buddy", a Greifswald student who is interested to getting to know and supporting an international student during his or her time at the university.

The [Allgemeine Studierendenausschuss \(AStA\)](#) and its representative for international students are the elected student representatives, and as such, are always ready to provide resources and assistance in many of the situations encountered by students. They are capable of helping with many of the typical problems that students face, and in many cases have the necessary contacts to provide swift solutions. Through the "Weltfreunde" project, they also facilitate interactions between local and international students.

The [Local Erasmus Initiative \(LEI\)](#) plays a particularly important role for exchange students through designated contacts. LEI is an independent student group of about 15 students with different degree programmes. Their goal is to make international students' time in Greifswald unique and worthwhile, and they support contact between exchange students and students of the University of Greifswald. At parties, on field trips (to Hamburg, Berlin or Hiddensee), and at other events such as barbecues, international dinners etc., they provide opportunities to meet other students and to experience Greifswald and the surrounding region.

Lokale Erasmus Initiative
Greifswald (LEI Greifswald n.V.)
c/o International Office
Domstraße 8
17489 Greifswald
lei@uni-greifswald.de
greifswald.esn-germany.de

One of the best ways to get to know and feel at home in a new city is to meet people and make new friends. Greifswald offers plenty of opportunities to get involved with local groups and activities such as sports teams or clubs, which will help you make the most out of your time here.

The [University Sports Centre](#) offers over 200 courses, including sailing courses benefiting of a university on the coast. Don't miss the sign-up period at the start of the semester!

For those with a passion for music, there is the chance to participate in one of the choirs like the big [University Concert Choir](#) or the Slavonic Studies Choir called [Choryllisch](#), the University's [Symphony Orchestra](#), or even the [Big Band](#).

Artists and people who like hands on activities can find opportunities to create in the sewing workshop [Kabutze](#), and the artist organisation [Polly Faber](#).

The Greifswald International Student Festival [GrIStuF](#) is an excellent place to demonstrate your organisational talents and get to know people from all over the world.

If business is your passion, you may find exciting opportunities and connections through the [Akademischer Börsenverein](#) (Academic Capital Market Group), the [LEO Club](#) Greifswald, and the [Debate Club](#).

[Greenpeace](#) Greifswald, [NABU](#) Kreisverband Greifswald, Tierschutzbund Greifswald, Umgebung e.V., and other volunteer associations offer productive chances for political and environmental engagement.

Those inspired to work with multimedia can get involved with [GUSTAV](#), (Greifswalder Universitätsstudentischer Autorenverein), [Moritz-Media](#) (web, print, and TV), or radio 98eins.

And of course you may also join the student theatre [StuThe](#).

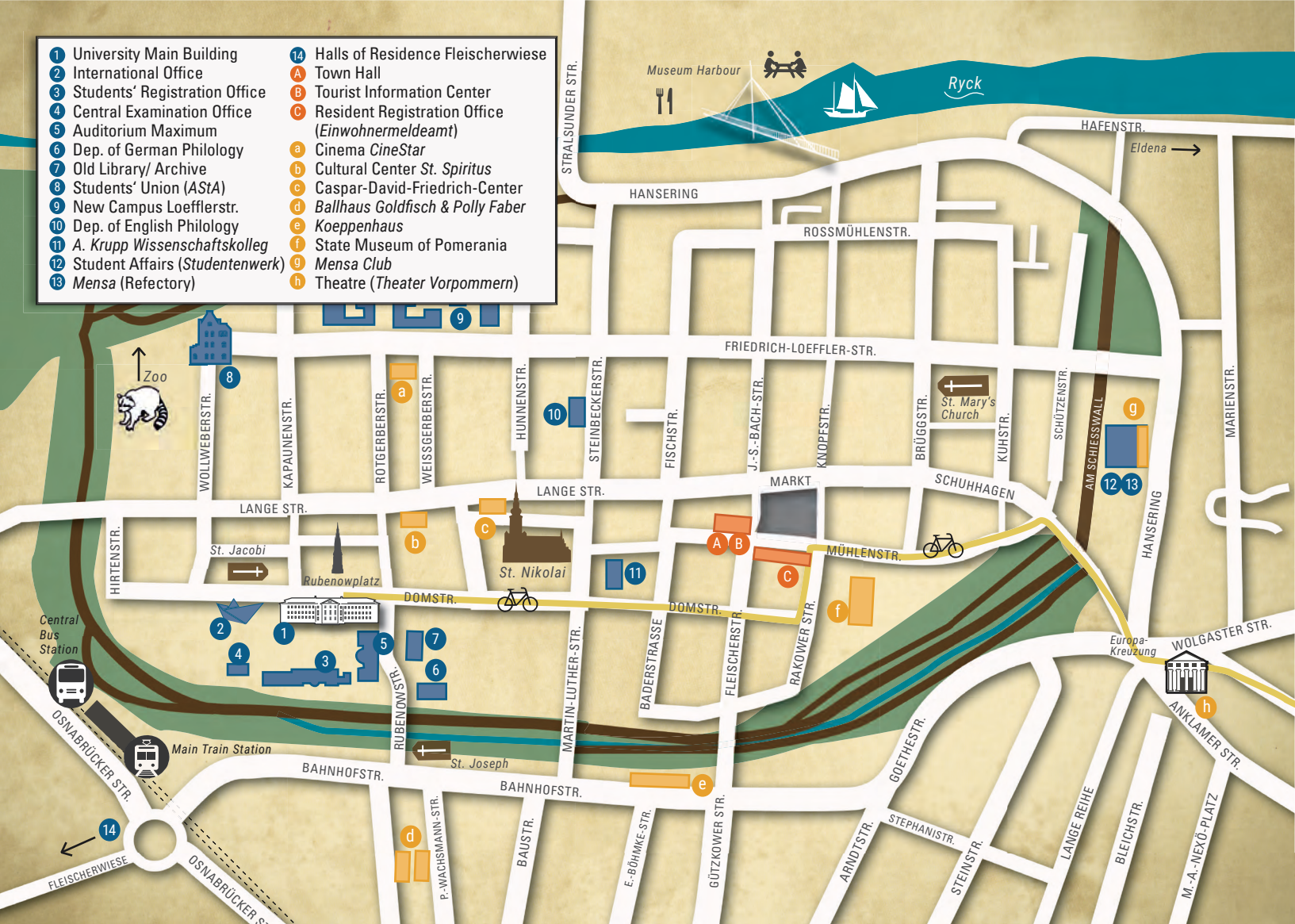


You can participate in the Concert Choir.



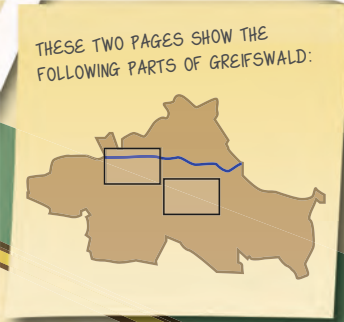
or you can join a sports team!

- | | |
|------------------------------------|---|
| 1 University Main Building | 14 Halls of Residence Fleischerwiese |
| 2 International Office | A Town Hall |
| 3 Students' Registration Office | B Tourist Information Center |
| 4 Central Examination Office | C Resident Registration Office
(Einwohnermeldeamt) |
| 5 Auditorium Maximum | a Cinema CineStar |
| 6 Dep. of German Philology | b Cultural Center St. Spiritus |
| 7 Old Library/ Archive | c Caspar-David-Friedrich-Center |
| 8 Students' Union (AStA) | d Ballhaus Goldfisch & Polly Faber |
| 9 New Campus Loefflerstr. | e Koeppenhaus |
| 10 Dep. of English Philology | f State Museum of Pomerania |
| 11 A. Krupp Wissenschaftskolleg | g Mensa Club |
| 12 Student Affairs (Studentenwerk) | h Theatre (Theater Vorpommern) |
| 13 Mensa (Refectory) | |





- | | |
|--|--|
| 15 Halls of Residence
Geschwister-Scholl-Str. | 25 Department of German as a
Foreign Language |
| 16 Halls of Residence
Max-Kade-Haus | 26 Halls of Residence
Makarenkostr. |
| 17 University Dental Clinic | 27 Lecture Theatre Kiste |
| 18 University ENT Clinic | 28 Halls of Residence
Ernst-Thälmann-Ring |
| 19 Natural Sciences Campus | D Immigration Office
(Ausländerbehörde) |
| 20 Neue Mensa (New Refectory) | i Student Theatre STuThe |
| 21 Central Library | j Copy Shop dpc |
| 22 University IT Centre | k Stadium |
| 23 Arboretum | l Kiste Club |
| 24 University Hospital | |



 Southern Train Station
(Südbahnhof)

ERNST MORITZ ARNDT
UNIVERSITÄT GREIFSWALD



Wissen
lockt.
Seit 1456



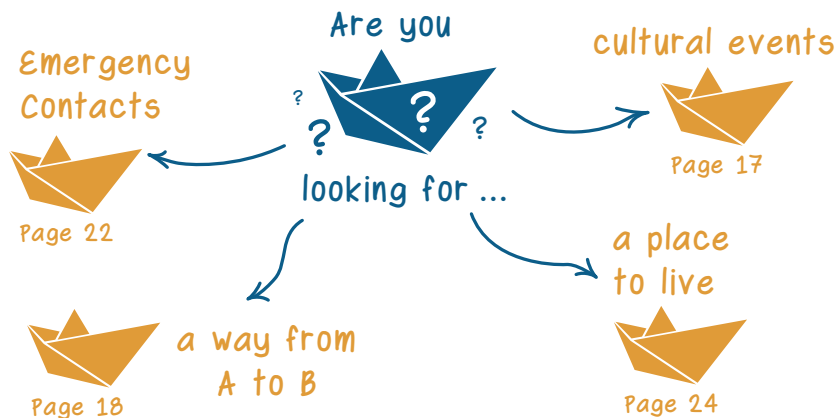
**Greifswald
International**

Living in the
University and Hanseatic Town of Greifswald

WELCOME TO GREIFSWALD!

Ever since the University was founded, Greifswald and the University have always been connected at an international level, welcoming academics, merchants and more recently tourists from around the Baltic Sea and further afield. These international ties have shaped the town and its people, and we invite you to experience Greifswald's welcoming atmosphere and possibly leave your own mark as well.

The following pages provide an overview of the town and University of Greifswald and a collection of the most important academic, administrative, and cultural information necessary to ensure your academic success in Greifswald. The University's International Office (IO) will help you navigate life and studies in Greifswald. So, set sail!



Content

A Few Words of Welcome from the Mayor	2
And a Few Words of Welcome from the Town Council	3
Living in Germany	4
Living in Mecklenburg-Vorpommern	7
Life in Greifswald	8
Student Accommodation	9
Getting Around	10
German Food	11
Religion	12
Culture at its Finest	13
Events in Greifswald	14
A Truly Academic Town	16
Contact Information	18
Town Map	20



Dr. Stefan Fassbinder

Did you know?

The Hanseatic League was a medieval guild of sea merchants. It dominated Baltic maritime trade along the coast of Northern Europe from the 13th to 17th Century. It was economically and politically influential and shaped the culture of the so-called Hanseatic towns.

WELCOME TO THE UNIVERSITY AND HANSEATIC TOWN OF GREIFSWALD

Dear students,

I would like to welcome you to the University and Hanseatic Town of Greifswald – a young town based in a historical setting. When you walk around the town centre you can tell that Greifswald was heavily influenced by the height of the medieval Hanseatic League: three giant Gothic red brick churches and the beautiful facades of the houses on the market square bear witness to our Hanseatic tradition.

There has always been a close connection between the town and the University. It goes back to 1456 when the alma mater was actually founded by the mayor of the town. Thanks to the University, Greifswald is dynamic and modern today, it is in fact one of the youngest towns in East Germany. What makes Greifswald especially attractive is its location on the Baltic coast, close to two islands with beautiful beaches and sailing areas.

In recent years, Greifswald has developed into a nationally and internationally respected location of technology and research. In the field of plasma physics, for example, we can offer a wide range of research topics and capacities as well as their interdisciplinary application.

In order to keep a healthy work-life-balance, here you will find more than 80 sports clubs and a wide variety of cultural events and international festivals.

Have a good time in Greifswald!

Dr. Stefan Fassbinder
Lord Mayor

A FEW WORDS OF WELCOME FROM STUDENT MEMBERS OF THE TOWN COUNCIL

Dear students,

Greifswald is not just a town for studying. Its a town with music, art, and vibrant student life. Look out for exhibitions at Polly faber, an art collective. Listen to music all over town when the fête de la musique brings dancing to our town, or meet great people at the famous running dinner organised by the Greifswalder International Students Festival. Dance in one of the student clubs, or enjoy them all in one night at the bi-annual Clubs-U-Night. You should definitely have a barbecue with your friends at the museum harbour, while the sun is shining. The best thing is, all of this is made by the students themselves.

If you want to get to know Greifswald better you should look out for opportunities to become involved. We have the students to thank for their cultural contributions, and we encourage you to get involved! Through community involvement, you are sure to meet interesting individuals, and possibly make lifelong friends. We welcome you to take part in the constantly evolving student culture creating exciting memories of your time here in Greifswald.

Milos Rodatos

Member of the town Council

Erik von Malottki

Member of the town Council



Milos Rodatos



Erik von Malottki



"There are many reasons for choosing a German degree, such as gaining an internationally recognised top degree, having the chance to explore and absorb good practices from German culture and learning the German language (which opens many doors). It is almost impossible not to consider Germany when looking for international study opportunities." (Rafael – Brazil)

LIVING IN GERMANY

As one of the most densely populated countries in the world, Germany is home to over 82 million people with the general population occupying an area of approximately 357,022 km². Today, roughly 19 percent of Germany's citizens come from an immigration background. German society has been shaped by a plurality of lifestyles and ethno-cultural diversity. Three quarters of Germany's inhabitants reside in urban centres. The efficient infrastructure and city planning has helped to preserve the country's natural beauty, meaning more than 30 percent of Germany is covered by natural forests and woodlands.



You can easily visit Berlin and...

Did you know?

East and West Germany still look different from outer space at night because of the different types of street-lamps used.



...Hamburg from Greifswald



Munich by David Kostner [CC BY-SA 2.0]; Alps by Alagna; Lüneburg Heath by Willow, [CC BY 2.5]; Wissower Klinken by Lapplaender; Sanssouci Palace by Mbzt; Cologne Cathedral by Thomas Wolf; Neuschwanstein Castle by Softeis; Ostfriesland by A.Hückelheim [CC-BY-SA-3.0] all via Wikimedia Commons



LIVING IN MECKLENBURG-VORPOMMERN

Greifswald is situated in one of the most beautiful and natural regions of Germany. The federal state of Mecklenburg-Vorpommern has more than 2000 lakes and an estimated 1900 kilometres of Baltic Sea coast. If you enjoy water sports such as sailing, windsurfing or kite surfing, canoeing, diving, fishing, or simply a relaxing day at the beach, you will certainly find plenty of options in this lovely coastal region.

Many Germans come here to relax and enjoy their holidays on the Baltic Sea coast or on the islands of Rügen, Usedom, or Hiddensee. Studies in Greifswald are not limited to the walls of the modern library, students of the University are known to take to the sunny beaches and continue learning whilst listening to the calming waves of the Greifswalder Bodden.

The natural appeal of the region was made famous by the romantic paintings of Caspar David Friedrich (1774-1840) and has been preserved so well that many

of the locations are still recognisable to this day. The innate beauty found within the ruins of the medieval monastery of Eldena, the famous chalk cliffs on the island of Rügen, as well as the picturesque silhouette of Greifswald's skyline served as inspiration for some of his best-known and most celebrated works.



The medieval monastery of Eldena inspired many painters of the Romantic period.



Caspar David Friedrich
(5th September 1774 –
7th May 1840)



Did you know?

The "Strandkorb" is unique to the German coastal regions. It is designed to provide comfort, storage space and protection from sun, wind and sand.



„My favorite activity and necessity in Greifswald is biking around the town. I am amazed how quickly and safely I can get from A to B by bike while enjoying the beautiful view. Not only am I faster by bike, but I also like to think that it keeps me fit and healthy. Furthermore, biking is good for the environment.” (Anika – Croatia)

Tourist Information

Located in the Town Hall
on the Market Square
Phone +49 3834 521380
Opening Hours: Mon-Fri 10-17/18
www.greifswald.de
www.greifswald-tourismus.de

LIVING IN GREIFSWALD

With a growing population of currently over 55,000 inhabitants, Greifswald has managed to preserve its Hanseatic heritage throughout its transition into a modern cosmopolitan town. It is home to one of the most beautiful central market squares in northern Germany, and the ongoing restoration of the many historic buildings ensure the enjoyment of their traditional historic appearance for coming generations. True to its origins as a member of the Hanseatic League, Greifswald continues to offer easy access to important cities such as Berlin, Hamburg, Copenhagen, Lund, and Szczecin.



Equipped with modern university facilities, Greifswald attracts students, researchers, artists, and entrepreneurs from all over the world. The mutually beneficial relationship between town and University has been enjoyed for generations. With considerable influence on topics of regional development, the University continues to support the develop-

ment of the town through the practical application of knowledge and understanding in the fields of economy, agriculture, and regional development. The young and vibrant atmosphere of Greifswald is due to the large student population. In 2015, more than 11,000 students were enrolled at the University.

STUDENT ACCOMMODATION

In order to make moving to Greifswald easy, students enrolled at the University may take advantage of single or double rooms or choose individual apartments available within the six student residences handled by the Office of Student Affairs (Studentenwerk). Accommodation is also available for those with mobility impairments. All apartments are furnished with a full bedroom, launderette access including washers and dryers, telephone and television connections, and a place to park your bicycle. Car-parking spaces are also available. The University provides an internet connection for all students in their rooms (via LAN cable). Bathroom facilities are communal, but limited to two or three rooms. Kitchens are fully equipped and shared by the floor.

Private apartments are available throughout the town with a wide variety of price, size, and location. Many students find living together in a "WG" (shared flat)

to be an ideal arrangement, sharing the expenses of furnishing the kitchen, heating, electricity, internet etc.



Greifswald Office of Student Affairs
(Studentenwerk Greifswald)
Am Schießwall 1-4
17489 Greifswald

For all relevant information
regarding student residences,
visit: www.studentenwerk-greifswald.de/wohnen



"I recommend living in a student residence because it is a nice way to have a real German experience, to learn the language, and to learn more about their culture." (Fan – China)



To buy, rent and repair a bike:

www.ryckwaerts.de

www.werkstaetten-pdv.de

www.usedomrad.de

Did you know?

In comparison to all other towns and cities in Germany, Greifswald has been recognised as having the highest percentage of daily cyclists.

GETTING AROUND

With minimal costs and a host of benefits including fresh air, exercise, and of course, enjoyment, riding a bicycle is the most popular way to navigate the town of Greifswald. The "Fahrradstraße" (bike lane) also referred to as the "Student Highway" makes navigating the town a breeze. A trip through the town and along the banks of the river Ryck to the bay only takes about fifteen minutes.

Of course, with bicycles fulfilling such a vital role within the town, there are a number of businesses handling the rental, sales, and maintenance of all things bicycle related.

With the short distances in the area, walking is also an effective mode of getting from A to B and a great way to enjoy the scenery and architecture. Getting around Greifswald without a bike is made easier by the network of three bus lines interconnected through the most important locations and served by sixteen buses.

Further information regarding scheduling and pricing may be found on the town services website: www.sw-greifswald.de

If you are travelling into the countryside and surrounding area, having a car can make trips to neighbouring communities fast and easy, while at the same time allowing you to enjoy the beautiful scenery. However, the time saved by driving in the town is often offset or increased while searching for an available parking spot. Trains provide an excellent alternative to cars, with Germany having what is widely recognised as one of the best public transport systems in the world. The vast network of regional and intercity trains can make travelling throughout Germany relaxing and comfortable.

There are two train stations in Greifswald. Please be sure to exit the train at "Greifswald" (not "Greifswald Süd") for the town centre.

GERMAN FOOD, MORE THAN EXCELLENT BEER, SAUSAGE, AND BREAD

Regional dishes are perhaps one of the best ways to explore your surroundings. Easy access to the bounty of the sea has made fish rolls a staple of the northern German diet for generations. Variations in fish and toppings provide endless combinations. Traditionally, they are made with white rolls and garnished with lettuce and onions. The fish may be served warm or cold, pickled and sour like the Bismarkhering, or salty like Matjes, smoked, or even battered and fried. There really is no wrong choice.

Delicious, nutritious, and reasonably priced food can be purchased from the modern University Refectory (Mensa) operated by the Studentenwerk. With growing demand for organic food, the Mensas offer some organic meals and carry a “vital-line”. There are also a number of shops in the town specialising in fair trade and organic products, and provide a full selection of wholesome goods.



Though known throughout the world for their excellent beer, statistics show that water and coffee are in fact the Germans' preferred beverages. With more than 1,300 breweries, beer is an important cultural and historical symbol of Germany. The endless pursuit of excellence has been carried over into the manufacturing of sausages, with regional specialties such as “Nürnberger Würstchen”, “Thüringer Rostbratwurst”, “Bayerische Weißwurst”, and “Berliner Currywurst”. From the local butcher to the outdoor festivals of every season, German sausages are second to none. Perhaps even more deeply ingrained in German culture is the love of bread. In a country with such a long and storied background, regional specialties come from countless sources, with fresh bread just around the corner at your local bakery.



“The best international food can be found in your friends' kitchens! Yes true! In Greifswald you will make friends with many international students and you will find yourself spending your weekends cooking and enjoying eating international food with them. Furthermore, many international events here allow you to bring your own traditional food, and you get to try food from all around the world in return.” (Valy – Laos)



St. Marien or "Dicke Marie"



Catholic Church St. Joseph

RELIGION

Germany enjoys religious freedom, allowing members of various denominations to practice their faith within a safe and friendly environment.

Three beautiful churches shape the face of the town centre with their impressive architecture: [The Greifswalder Dom](#) (cathedral), the church of [St. Marien](#) and the church of [St. Jacobi](#). Members of

the Catholic Church can worship at the church of [St. Joseph](#). Muslims can find further information at the [Islamic Cultural Center](#) in the Makarenkostraße.

Many of the local communities are open for international guests. More information and a complete list of denominations and places of worship can be found on the homepage of the Welcome Centre.



The interior of the Greifswalder Dom St. Nikolai

CULTURE AT ITS FINEST

Greifswald's cultural scene enjoys a mutually beneficial and inspirational relationship between independent art production and professional refinement. The uninhibited alternative atmosphere of the [Polly Faber](#) stands alongside the refined theatre ensemble [Theater Vorpommern](#), united in their celebration of all forms of artistic expression. Theater Vorpommern is home to many forms of performance art such as ballet, music, and theatrical productions.

The students' theatre, known as the [StuThe](#), provides the students with a venue hosting regular performances from improvisational groups, popular plays, and more.

Owned and operated by a local actor, Café Koeppen regularly offers a variety of live entertainment including poetry and live music. The Koeppenhaus Literature Centre celebrates important literary works and contemporary writers;

and the student writing group GUstAv offers students the opportunity to prove and develop their own writing skills. Greifswald and its citizens are clearly beneficiaries of so many excellent outlets for artistic and cultural expression.

Since 2002, the biennial Greifswald International Students Festival (GrIStuF) every two years invites up to 400 students from 80 countries to Greifswald to discuss the current problems of globalisation. GrIStuF also aims to promote tolerance and transnational understanding. Our international students organise many smaller and larger events over the course of the year, which are supported by the International Office.

At night, you can find friendly faces in one of the student-run clubs such as the [Mensa-Club](#), the [Kiste-Club](#), or the [Geo-Keller](#), or you could try the privately owned [BT22](#). Sleep is overrated anyway!



"My favorite event in Greifswald is the 'Fetê de la Musique' on the 21st of June. On that day the whole town is turned into a stage and you can listen to great music on the streets for free." (Vittoria – Italy)

For dates and information on cultural events, visit: www.kulturmodul.de

Best way to stay informed:

www.kulturmodul.de

Easter- and
Flowermarket

Traditional Market,
Art's & Crafts

MARCH

Nordischer
Klang

Scandinavian Music
Festival

Regional Art
Festival

Family Flea Market in the
Fleischervorstadt
Area

Fleischer-
Vorstadt-
Flohmarkt

MAY

JUNE

Greifswald
International Students
Festival,
every 2 years

Grifstuf

Greifswald
International
Students
Festival

Bach-
Woche
Bach
Music Week

One-day Street-Music
Festival

Fête de la
Musique

Koeppen-
tage

Koeppen Literature
Event

An Eventful Year in Greifswald



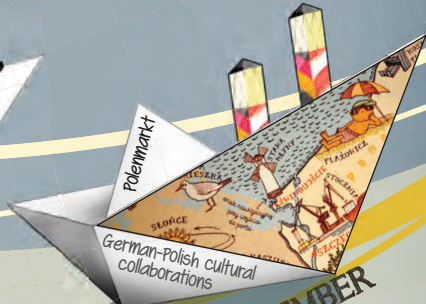
JULY



SEPTEMBER



OCTOBER



NOVEMBER



DECEMBER



Pommersches Landesmuseum
(Pomeranian State Museum)
www.pommersches-landesmuseum.de

Theater Vorpommern
www.theater-vorpommern.de

Hans Fallada Public Library
Knopfstraße 18-20
Phone +49 3834 778160
www.stadtbibliothek.greifswald.de

Did you know?

A great source of pride for the German people, the German theatre and orchestral landscape has been recognised by UNESCO for its contributions to worldwide culture.

A TRULY ACADEMIC TOWN

The University of Greifswald is not the only source of education. The town itself boasts many opportunities for learning. Perhaps the most popular of which is the **Adult Education Centre** (Volkshochschule), offering a variety of classes and workshops, and the socio-cultural centre St. Spiritus.

The **Hans Fallada Public Library** has a wide range of literature, along with an extensive DVD catalogue. There are plenty of opportunities to enjoy readings, listen to jazz concerts, and see the occasional film in the "**Literaturzentrum Vorpommern**" located in the "Koeppenhaus". The "Koeppenhaus" was the birthplace of famous 20th Century German writer Wolfgang Koeppen.

As previously stated, "Theater Vorpommern" is one of the last theatres in the region to host a ballet, an opera-ensemble, an orchestra, a choir, and a fixed ensemble of actors, with almost daily performances.

Not only a museum for regional history, the "**Pommersches Landesmuseum**" (Pomeranian State Museum) houses an impressive collection of fine art, including works from one of the most famous and influential Romantic artists and Greifswald native, Caspar-David-Friedrich.



"Croy Teppich"

The university's Croy Carpet from 1554, testifying for the Pomeranian and Saxon history, is one of the museum's highlights.

Research is not limited to the confines of the University. Cooperation and collaboration with research facilities and institutions within the region encourages, facilitates, and expedites mutual growth and progress for all involved.

In addition to the University of Greifswald, there are many other important academic institutions including the [Leibniz Institute for Plasma Science and Technology](#), the [Friedrich Loeffler Federal Research Institute for Animal Health](#), and the [Max Planck Institute for Plasma Physics](#), based in Greifswald and the surrounding area.

The [Biotechnikum](#) centre and the "Technologiezentrum Vorpommern" offer excellent opportunities for collaborative research efforts.

The [Alfried Krupp Wissenschaftskolleg](#) is one of the most important academic institutions in Greifswald. Offering re-



Wendelstein 7-X, the world's largest fusion device of the stellarator type by the Max-Planck-Institute of Plasma Physics (IPP)

searchers from around the world six to twelve month long fellowships in Greifswald, the Alfried Krupp Wissenschaftskolleg provides fellows the opportunity to complete their research projects. Researchers are often invited for public lectures and discussions. There is no cost to attend, and it is an excellent opportunity to take part in international discussions.



Friedrich Loeffler Research Institute for Animal Health on the island of Riems



Institute for Advanced Study
Alfried Krupp Wissenschaftskolleg
Martin-Luther-Straße 14
www.wiko-greifswald.de

Further important information on general health and emergencies can be found in the Student Affairs information brochure titled "First Aid: an illustrated health dictionary; information for foreign students in Germany" or "Erste Hilfe – Illustriertes Gesundheitswörterbuch: Hinweise für ausländische Studierende in Deutschland"

www.studentenwerke.de/sites/default/files/gesundheitswoerterbuch.pdf

CONTACT INFORMATION

Emergency Telephone Numbers

Police 110
Emergency/Rescue Service(s) 112
Fire Brigade/ Fire Service 112

Emergency Poison Information
Hotline +49 361 730730
Emergency Poison Information number
of the Greifswald University Hospital
+49 3834 86 72 70

Telephone helpline 0800 111 0 111

Automobile breakdown
Hotline - Germany (ADAC) 0180-222222

Social and Psychological Counselling
provided by the Office of Student Affairs
Located at Schießwall 1-4, Raum 1.08
17489 Greifswald Tel +49 3834 86 17 04

To report and freeze all lost or stolen
German credit cards: 116 116

Important Offices in Town

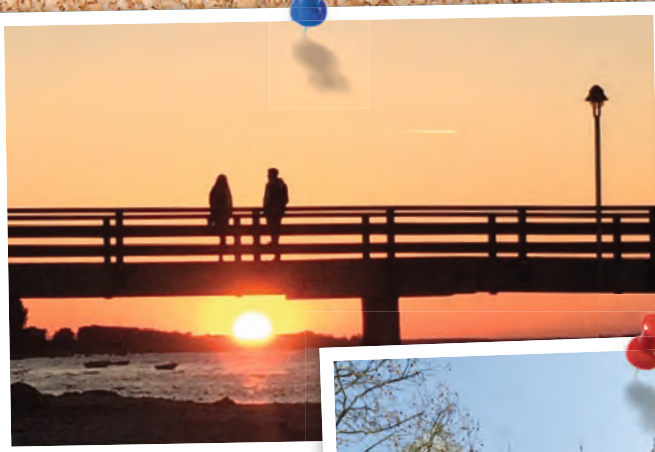
Immigration and
Residential Permit Office
Spiegelsdorfer Wende, Haus 2
Phone +49 3834 8760 2906
Opening Hours:
Tue 9-12, 14-18
Thu 9-12, 14-16

Residents Registration Office
Markt 15
Phone +49 3834 8536 32
Opening Hours:
Tue-Fri 9-12,
Tue 14-18, Thu 14-16

Did you know?
you can find almost anything
in Greifswald's online forum
www.ryckwaerts.de

My Greifswald





Imprint

Publisher:
Prof. Dr. Johanna Weber
(Vice-Chancellor of the University of Greifswald)

Editors:
Katharina Schmitt (Director of the International Office)
Kristin Gora

Photo credits – Town

International Office (this page, p. 7); Kilian Dörner (this page); Dr. Stefan Fassbinder (p. 2); Erik v. Malottki/Milos Rodatos (p. 3); Oliver Böhm (this page, p. 10); Sarina Jasch (Cover, p. 4, 8, 9, 11, 13); Walter Graupner (p. 19); Jan Meßerschmidt (this page, p. 7, 8, 12, 16); Hans-Werner Hausmann (p. 12); Studentenwerk Greifswald (p. 9); Vincent Leifer (p. 17); Wikipedia Commons: „Brandenburger Tor“ by Thomas Wolf, www.foto-tw.de/HH/Binnenalster by Avalon5761/„Wendelstein-7X“ by Gwurden – CC-BY-SA 3.0 (p. 4, 17); „Fischbrötchen“ by Dirk Ingo Franke – CC-BY-SA 2.0 (p. 11)

Photo credits – University

International Office (this page, p. 9, 18, 20, 21); Anja Ullmann (p. 9, 14, 15); Sarina Jasch (p. 10, 19, 20, 22, 24, 26); Kilian Dörner (Cover, p. 4, 8, 10, 22, 27); Julia Schmetzer (Cover); AStA Greifswald/Alexander U. Lenz (p. 3); Oliver Böhm (p. 10, 13, 23, 27); Jan Meßerschmidt (p. 5, 6, 7, 8, 11, 12, 24); Franziska Vopel (p. 4); Hans-Werner Hausmann (p. 4, 6, 13); Vincent Leifer (p. 2);

Design

Graphics:
Annabelle Diepold

Layout:
Business2Internet
www.business2internet.de